

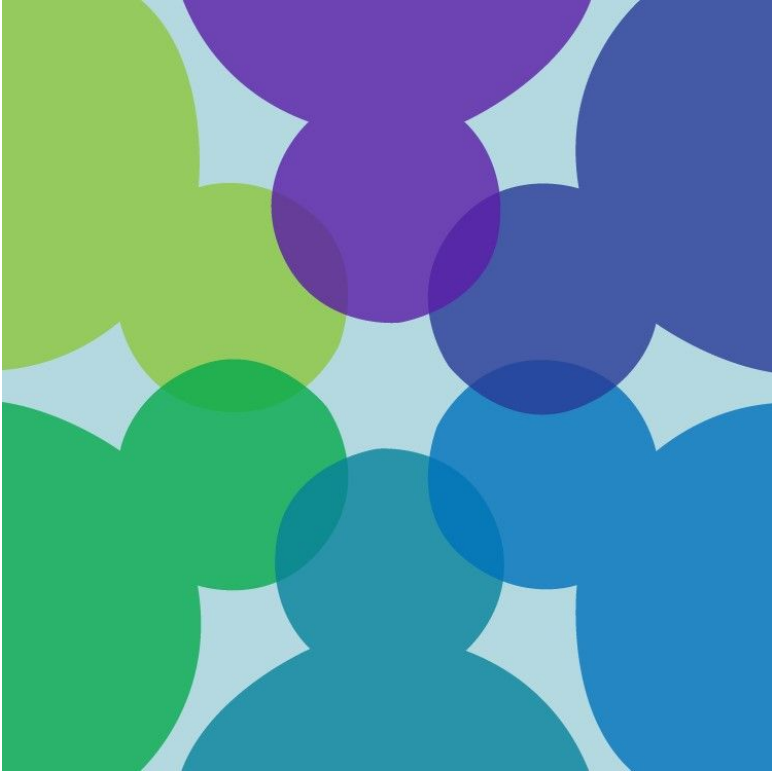
# **DPI & SCW Informational Session - Private School Choice Programs (PSCP)**

**October 25, 2023**



WISCONSIN DEPARTMENT OF  
**Public Instruction**  
Jill K. Underly, PhD, State Superintendent

# Introductions

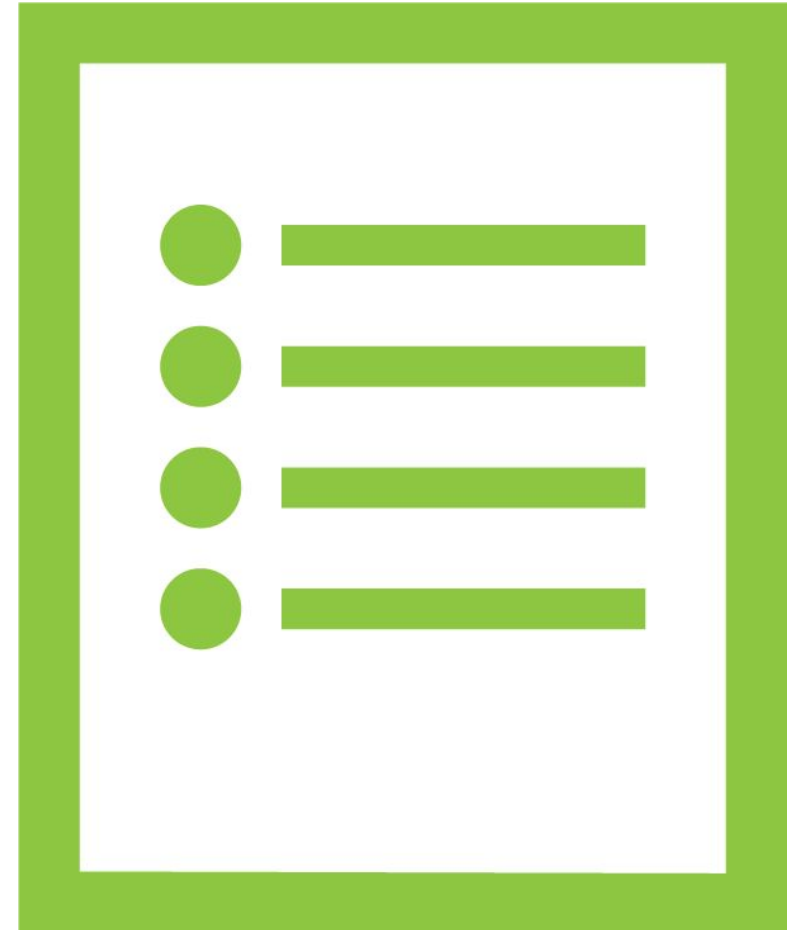


- **Department of Public Instruction (DPI) Staff**
  - Tricia Collins, Assistant State Superintendent Division for Finance and Management
  - Chanell Crawford, Director of Parental Education Options Team
  - PSCP and SNSP Team Members
- **School Choice Wisconsin (SCW) Staff**
  - Nic Kelly, President
  - Amy Loudenbeck, Director of Policy and Government Affairs
  - Carol Shires, Vice President of Operations
  - Nataly Andrade, Director of Outreach, Hispanics for School Choice

# Agenda

## Informational Session - PSCP

- Timing and Focus of Changes
- Moving Toward One Program
- Application Process
- Other Areas of Potential Change
- Next Steps



# Timing

- If made, majority of changes would take effect for the 2026-27 school year, after the school district participation limits phase out.
- Changes related to the process and requirements for “new private schools” to register to participate in the PSCP may become applicable earlier.
- Hope to have a bill complete by early 2024.



# Focus of Potential Changes

- **Administrative changes** (for example, changes to application process and shift from three PSCP to one)
- **Areas outside of the scope**
  - Funding mechanisms
  - Student eligibility criteria



# Potential Move Toward One Program

- WPCP, MPCP, and RPCP will be combined to one PSCP. Eligibility criteria will still be different based on residency and consistent with current requirements.
- Schools will be responsible for running their own random selection process (DPI will no longer run the WPCP draw beginning for the 26-27 school year).
- Some aligning of requirements across programs will be needed (for example, January enrollment audit deadline and certificate of occupancy).
- Increased efficiencies for schools and families.



# Potential Changes to Application Process

- **February PSCP Re-enrollment Process**

- In February, schools will work through a process with PSCP students who were counted at their school on the 2nd Friday in January and not found ineligible through the duplicate process.
- Schools will send a notification to those families letting them know they have a PSCP seat, if they accept it by a certain date in February.
- There will be no application or residency documentation required in February as part of this process.



# Potential Changes to Application Process (continued)

- For those included in February PSCP re-enrollment process -
  - Schools must confirm these students still reside in WI and at their address in OAS/the PSCP system as of the 3rd Friday in September.
    - The confirmation must include the address as of the 3rd Friday, be in writing (email, letter, form, etc.), and must be retained.
  - If the student has moved from the address in OAS/the PSCP system, the school must obtain residency documentation that meets certain requirements.
  - We expect that address and parent/guardian name changes will be reported in the 3rd Friday in September Pupil Count Report.





# Potential Changes to Application Process (continued)

- Application periods for new students, continuing students who want to switch schools, and continuing students who did not accept a seat during the February PSCP re-enrollment process will begin in March.
- The residency and income documentation requirements and process will generally not change for students applying during an application period.



# Other Areas of Potential Change

- IT/system changes
- Registration requirements and process for “new private schools”
- Virtual instruction
- Audit-related requirements
- Special Needs Scholarship Program



# Next Steps

**We want to hear from you!**

In the coming weeks, DPI and SCW will be sending all Choice administrators and designees the link to a survey to gather your input.



# Thank You!

**Any questions?**

