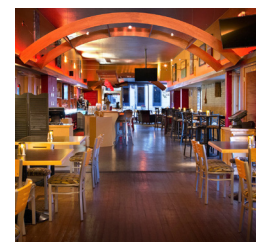


Wisconsin Council of Religious & Independent Schools meet Food



Asian

ASIANA

1198 George Towne Drive, Pewaukee
262-695-3888 • asianadining.com
Asian steak house, Chinese/Thai, Hibachi, Sushi

MEIJI CUISINE

2503 Plaza Court, Waukesha
262-717-9868 • meijicuisine.com
Japanese steak house, Chinese, Hibachi, Sushi

Cafes

CAFÉ DE ARTS

830 E. St. Paul Avenue, Waukesha
262-446-1856 • cafedearts.com
*European coffee house and micro-roastery,
pastries, panini sandwiches, soups, salads*

ROOTS COFFEEBAR & CAFE

363 W. Main Street, Waukesha
262-232-8564 • rootscoffeebar.com
Coffeebar featuring warm sandwiches and wraps

THE STEAMING CUP

340 W. Main Street, Waukesha
262-522-3605 • thesteamingcup.com
Coffee, tea, gourmet sandwiches, salads & more

Farm to Table

ARTISAN 179

179 W. Wisconsin Avenue, Pewaukee
262-691-0200 • artisan179.com
Locally sourced, Pewaukee Lake views

WISCONSIN MACHINE SHED

N14 W24145 Tower Place, Pewaukee
262-523-1322 • machinshed.com/pewaukee
Home-style American

Irish

THE CLARKE IRISH RESTAURANT

314 W. Main Street, Waukesha
262-549-3800 • theclarkehotel.com
Authentic Irish food

Italian

MIA'S ITALIAN CUISINE

800 Clinton Street, Waukesha
262-547-6503 • miaswaukesha.com
Traditional Italian pastas, pizza and sandwiches

Mediterranean

MELI BAR & RESTAURANT

294 W. Main Street, Waukesha
262-232-8175 • melidowntown.com
*American and Mediterranean cuisine including
small plates, salads, soups, burgers, sandwiches*

Mexican

LA ESTACION

319 Williams Street, Waukesha
262-521-1986 • laestacionrestaurant.com
Unique dining experience in old train station

SEESTER'S MEXICAN CANTINA

161 W. Wisconsin Avenue, Pewaukee
262-746-9400 • seestersmexicancantina.com
Diverse Mexican menu, Pewaukee Lake dining

Pizza

DOC'S DRY DOCK

N38 W27091 Parkside Road, Pewaukee
262-691-9947 • docsdrydoc.com
Sandwiches, calzones, many pizza options

MAGELLAN'S ON MAIN STREET

370 W. Main Street, Waukesha
262-542-0420 • magellanswaukesha.com
Appetizers, sandwiches, unique pizza options

Gastropub

TAYLOR'S PEOPLES PARK

327 W. Main Street, Waukesha
262-522-6868 • peoplesparkwaukesha.com
Gastropub featuring small plates and sandwiches

Small Plates

THUNDER BAY GRILLE

N14 W24130 Tower Place, Pewaukee
262-523-4244 • thunderbaygrille.com/pewaukee
Small plates, seafood, steak, sandwiches

TOFTE'S TABLE

331 Riverfront Plaza, Waukesha
262-408-5633 • toftestable.com
Culinary playground with sharable seasonal menu

Steaks

ERIC'S PORTER HAUS

229 Wisconsin Avenue, Waukesha
262-542-1300 • ericsporterhaus.com
Steaks, pork, seafood

JAKE'S RESTAURANT

21445 W. Gumina Road, Pewaukee
262-781-7995 • jakes-restaurant.com
Steaks, pork, seafood

Supper Clubs

5' OCLOCK CLUB

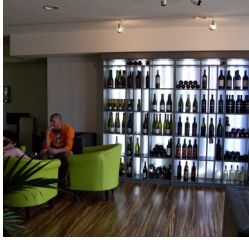
N38 W27091 Parkside Road, Pewaukee
262-691-9947 • docsdrydoc.com
Wisconsin Fish Fry Tues. - Fri., ribs, seafood

MICHAELS HOUSE OF PRIME

W278 N2316 Prospect Avenue, Pewaukee
262-691-1450 • foodspot.com/houseofprime
Appetizers, steaks, seafood, veal



Wisconsin Council of Religious & Independent Schools meet Fun



Brewhouses

BERNIE'S TAPROOM

351 W. Main Street, Waukesha
262-548-9800 • berniestaproom.com

Waukesha areas largest selection of craft beer on tap

RAISED GRAIN BREWING COMPANY

2244 W. Bluemound Road, Waukesha
262-505-5777 • raisedgrainbrewing.com

Craft brewery with 10 beers, trivia, bag leagues

Cigar bar

NICE ASH CIGAR BAR

323 W. Main Street, Waukesha
262-547-9009 • theniceash.com

Golf - Mini & Indoor

PRAIRIEVILLE PARK

2507 Plaza Court, Waukesha
262-784-4653 • prairievillpark.com

Adventure golf, batting cages, bumper cars

SWING TIME GOLF

1601 E. Main Street, Waukesha
262-547-3232

Mini golf, driving range and batting cages

WISCONSIN INDOOR GOLF CENTER

206 Travis Lane, Suite 2, Waukesha
262-436-0002 • wisconsinindoorgolfcenter.com

Indoor golf practice, hitting nets and greens

Open daily: 8am-10pm

Indoor Climbing

ADVENTURE ROCK

21250 Capitol Drive, Pewaukee
262-790-6800 • adventurerock.com

Indoor rock climbing for all experience levels

Open daily: 9am-10pm

Indoor Speedway & Games

VELOCE INDOOR SPEEDWAY

W229 N1400 Westwood Drive, Waukesha
262-232-6700 • velocemilwaukee.com

Indoor go-kart facility offering group rates and racing

Open daily: Mon.-Thurs.: 11am-10pm, Fri. 11am-midnight, Sat. 10am-midnight, Sun., 10am-8pm

POINT BURGER BAR

W229 N1400 Westwood Drive, Waukesha
262-955-9192 • pointburgerbar.com

Adjacent to Veloce Indoor Speedway, offering food and indoor game area

Painting

A STROKE OF GENIUS PAINT & WINE STUDIO

250 W. Broadway Street, Waukesha
262-893-4186 • paintwinestudio.com

Evening painting classes available for groups, and public parties with wide variety of canvas, wood and glass painting options

Parks

WAUKESHA COUNTY PARKS

262-548-7801 • waukeshacounty.gov/parksystem

Many parks to choose from for biking, golf, hiking, running and for winter sledding, skiing and more

Pool Hall

CUE CLUB OF WISCONSIN

2454 N. Grandview Boulevard, Waukesha
262-522-3615 • cueclubofwi.com

Pool, foosball, darts, shuffleboard and DJs on Friday and live bands on Saturdays. Open daily 11am-bar time

Shopping

A variety of options of antique, art, home, gift, speciality retailers, spas and more available for you to choose from at visitwaukesha.org/thingstodo

Wine Bars

CRUSH WINE BAR

378 W. Main Street, Waukesha
262-787-8159 • crushwaukesha.com

Unique wine, cheese and chocolate pairings, tasting events, live music. Open nightly Tues.-Sun. at 4pm

SPRING CITY WINE HOUSE

336 W. Main Street, Waukesha
262-232-8296 • springcitywinehouse.com

50 wines by the glass including sparkling, cheese plates, tasting events, live music. Open nightly Mon.-Sat. at 3pm

visitwaukesha.org provides many more options for events and things to do while visiting Waukesha Pewaukee or you find us on Twitter & Facebook @visitwaukesha

