

FIRST ANNUAL | WI COUNCIL OF RELIGIOUS & INDEPENDENT SCHOOLS

2017

WCRIS PROFESSIONAL LEARNING CONFERENCE
FOR PRIVATE SCHOOL EDUCATORS



AUGUST 11, 2017 | GLACIER CANYON LODGE | WI DELLS

wcris.staff@wcris.org | 608.287.1224 | wcris.org



Dear WCRIS Teachers

“Education is soul craft. Education involves the life of the soul.”



Sharon Schmeling,
WCRIS Executive
Director

Those words, spoken in Washington, D.C. during a Council for American Private Education meeting I attended for WCRIS, have long moved me as I face the challenges of promoting and defending private K-12 education in Wisconsin.

It can be so easy to forget that our schools are holy places where children are transformed so their lives reach beyond the City of Man, and aim towards higher things.

That’s especially true when we enter the daily vortex of limited resources, troubled students and parents, the crush of our secular culture and its incessant technology.

But by coming together as WCRIS school teachers once a year, we affirm the importance of feeding our souls by taking time to network with colleagues, gain insights from outside thinkers, and collaborate about the tools and values needed to face our shared challenges in the classroom.

Our coming together also helps identify how WCRIS can support its schools and our teachers. It informs our ongoing legislative advocacy that protects and defends access to busing, federal education programs, the K-12 tuition tax deduction, and the expansion of school choice programs, among many other issues.

In the last few years, WCRIS has:

- Worked with the Herb Kohl Foundation to create the **Private School Teacher of the Year award**, which provides an unrestricted \$3,000 award for a WCRIS teacher;
- Obtained for our member schools a **90% discount on QEI annual membership dues for professional development plan support**. WCRIS teachers and principals will each pay only \$12.50 annually (non-members pay \$125 each annually); and
- Organized a new, annual **Professional Learning Conference for Private School Teachers**.

These efforts to celebrate excellence in education, provide staff the tools they need to develop professionally, and help schools keep our students safe, help ensure that the mission of soul craft continues in K-12 education in Wisconsin.

Thank you for your support in that shared endeavor. And don’t hesitate to contact us if we can be of help. WCRIS is here to serve!

wcris.staff@wcris.org
608.287.1224
www.wcris.org
110 E. Main St, Suite 802
Madison, WI 53703

Our Mission

WCRIS supports the unique missions of member schools through advocacy, education and partnerships, to ensure an extraordinary education and equitable opportunity for each child



Our Accomplishments

WCRIS advocates for over 600 member schools, their teachers and the families they serve. We continuously assess the needs of our schools so we can align our goals to help them achieve success in providing the highest quality education possible.

Since our founding in 1974, WCRIS has:

- Helped amend the state constitution to provide equitable busing for private school children;
- Gained inclusion for private schools in the federal E-rate and state TEACH educational technology programs;
- Advocated for the Milwaukee Parental Choice Program to include religious schools and to expand vouchers statewide;
- Helped create a Wisconsin tax deduction for K-12 tuition expenses, saving private school parents an estimated \$30 million annually; and
- Supported the creation of the state's Special Needs Scholarship Program, which provides vouchers to parents of children with special education needs.

Daily, the WCRIS staff works to:

- Provide professional development for private school principals and teachers;
- Promote educational excellence by facilitating private school participation in the annual Kohl Foundation principal, teacher fellowship, and student scholarship competitions providing more than \$400,000 annually to WCRIS schools;
- Save member schools and teachers money by negotiating discounts on products and services that help schools fulfill their various missions;
- Prevent countless laws from being passed that hamper our schools' independence; and
- Protect private school students' access to busing and to federal special education services;

Member Benefits

Schools that belong to WCRIS receive the following member benefits for their teachers:

- Reduced QEI membership rates (\$112.50 in savings per teacher and principal);
- Participation in the Kohl Teacher Fellowship and Kohl Private School Teacher of the Year competitions;
- Access to "Current Events," a timely e-letter with news from Madison and Washington D.C.
- Advocacy at the State Capitol and Washington D.C. to protect and defend private schools, staff, and parents;
- Information and support on accessing federal ESSA Title programs
- Discounted registration rates for the annual WCRIS Professional Learning Conference for Private School Educators and the annual WCRIS Leadership Conference; and
- Urgent announcements and communications on changes to state and federal laws, and DPI rules and procedures.



Schedule of Events

7:00 – 8:00 am	Registration and Breakfast WCRIS Marketplace opens featuring services & solutions for your classroom
7:50 – 8:00 am	Welcome WCRIS Executive Director Sharon Schmeling
8:00 – 9:15 am	Morning Intensive <i>The Brain Rewired: Teaching At Its Best</i> Ann Anzalone
9:15 – 9:35 am	WCRIS Marketplace open
9:35 – 10:40 am	Workshop Session #1
10:40 – 10:45 am	Passing Period
10:45 – 11:50 am	Workshop Session #2
11:50 – 12:00 pm	WCRIS Marketplace open
12:00 – 1:00 pm	Luncheon Lunch Intensive <i>Communicating with the Digital Natives</i> Mike McGowan
1:00 – 1:30 pm	Gift Card Drawing WCRIS Marketplace open
1:30 – 2:35 pm	Workshop Session #3
2:35 pm	Adjourn

LUNCH SPONSORED BY
PROTECTING
THE GREATER
GOOD



Please return your conference evaluation to the registration desk and drop your name badge in the recycle boxes.



Ann Anzalone,
Teacher Consultant

8:00 - 9:15 am
Morning Intensive

ANN ANZALONE

The Brain Rewired: Teaching At Its Best

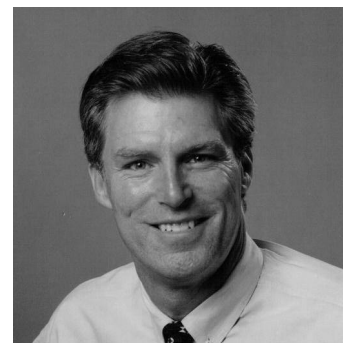
How do students learn differently today than they did in days of yesteryear? As the culture has changed, so has the developing brain. Learn about three important brain changes and how the brain is being rewired. Understand the importance of physical activity, memory and active learning to academic learning. Discover three best practices to use in the classroom. Learn how to develop students' memory, attention and focusing skills. Empower your students to be efficient, effective learners.

12:00 - 1:00 pm
Lunch Intensive

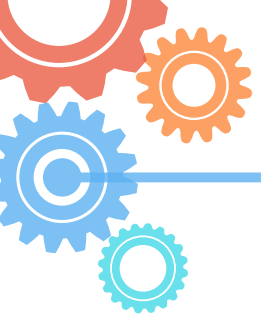
MIKE MCGOWAN

Communicating with the Digital Natives

In a time when the average child spends more time daily in front of a screen than sleeping, and parents have to be pruned away from their own devices, the culture has become increasingly less personal. Children cannot become proficient at skills they don't practice or see modeled. It is critical that children interact with the adults in their life with respect and that those adults model skills for these children that they will need as they mature.



Mike McGowan,
President, McGowan &
Associates



Session #1

9:35 - 10:40 am

SANDSTONE 89

Morning
Intensive
Speaker

ANN ANZALONE

Teacher Consultant

Setting Students Up For Success

This session focuses on the process of learning. Learn how to identify students' learning styles and how to improve their memory and brain speed to enhance learning. Learn three exercises to organize brain function as well as three techniques to actively engage students in the learning process.

TUNDRA AB

Kohl
Fellow

AMANDA SEPPANEN

Education Consultant, Sustainable Formations, LLC

When Decision-Making Fails: How to Move Students Towards Resiliency

Why do some students give up so quickly? What causes students to disengage and simply go through the motions? How do we guide reluctant students to take that next step forward?

Using the latest research in psychology and education, participants will learn why students: (1) Accept stagnant academic performance; (2) Make decisions emotionally; Use adversarial thinking. **In response to these common challenges, participants will learn how to:** (1) Make the emotional case for learning; (2) Lower the cost of failure; (3) Sell the idea that effort counts twice; and (4) Train students in parallel thinking.

This session will help educators implement practical strategies within their school communities.

TUNDRA EF

Sponsored
by Zaner-
Bloser

PAM PEROUTKY

Professional Learning Consultant,
PKP Professional Learning Services

The Magical Journey of Building the Beginning Reader's Brain

This session provides an in-depth look at what we know about the importance of creating "neural pathways" in the brain, and how that translates into practical classroom application in beginning reading instruction.

In this informative and practical session, we will explore: (1) Findings from brain imaging studies that are providing new insights into beginning reading instruction; and (2) How research translates into best practices in the classroom.

GLACIER AB

AARON & JOSH BAUER

Certified Love & Logic Presenters, Teachers
Garden Homes Lutheran - Milwaukee

Kids Don't Come with an Owner's Manual: Teaching with Love & Logic

In this presentation, teachers will be introduced to teaching with Love and Logic. There are nine essential skills that highly effective educators use to lower the stress in the classroom so that they can teach and children can learn.

Session #1 continued

9:35 - 10:40 am

TUNDRA CD

LEA DENNY | MS-CMHC, LPC-IT, NCC

Executive Director & Founder,
HIR Wellness Center

TARRAH RANDAZZO | MS, LPC-IT, NCC

WI DPI Licensed School Counselor &
Psychotherapist, Shore Counseling & Consulting
Clinic

*Fostering the Trauma Informed Classroom:
Understanding trauma and the brain and best
strategies and interventions for responsive
classrooms, Part I*

Through a trauma-informed and culturally responsive approach, part I of this two-part workshop, introduces types of trauma, including trauma in vulnerable populations.

This session offers an intro to strength-based and empathy-based interventions to help reduce both experiences of pain and anxiety in students while decreasing stress and burnout in classroom teachers. Signs of vicarious trauma or empathy fatigue and skills to reduce staff stress response systems will be reviewed. Part I will broach developmental differences in response to trauma and toxic stress, including the impact of trauma on academic, cognitive, and behavioral functioning in the school setting. Strategies in establishing brain-based interventions and reflective practices that are culturally respectful will be provided. Steps to creating opportunities for meaningful connections will be discussed, including approaches to building resilient and relationship-based engagement with all students – including those who have experienced trauma and struggle with challenging behaviors. Lastly, a deeper understanding of how trauma can impact the developing brain will lead to greater staff confidence in addressing and improving students' social and emotional skills, relationships, and reducing disruptive behaviors.

Session #2

10:45 - 11:50 am

TUNDRA CD

LEA DENNY | MS-CMHC, LPC-IT, NCC

Executive Director & Founder,
HIR Wellness Center

TARRAH RANDAZZO | MS, LPC-IT, NCC

WI DPI Licensed School Counselor &
Psychotherapist, Shore Counseling & Consulting
Clinic

*Fostering the Trauma Informed Classroom:
Understanding trauma and the brain and best
strategies and interventions for responsive
classrooms, Part II*

During session two of this two-part workshop, you will have the opportunity to learn about responsive/trauma informed school practices that can help support and teach students who have experienced trauma. We will share details about the implementation and results of a Responsive School Initiative that took place at an Archdiocese school in Milwaukee. We will cover specific classroom and school-wide practices that have been shown to increase academic achievement, decrease challenging behaviors, improve social and self regulation skills, and raise the quality of instruction. Specific tools and strategies that can be utilized in the classroom will be explained and demonstrated. These strategies not only support students who have been impacted by trauma but can also have a positive impact on all students and the school community as a whole.



Session #2 continued

10:45 - 11:50 am

SANDSTONE 8g

Morning
Intensive
Speaker

ANN ANZALONE

Teacher Consultant

Three Secrets of Behavior Management

Give your students the gift of learning. Teach them how to manage their own behavior. Learn how to structure the environment for optimum learning. Understand when and how to talk with children to help them develop their own thinking and problem solving skills. Learn how to set external limits while fostering internal boundaries to enable students to manage themselves. Understand three key secrets of behavior management.

TUNDRA AB

Kohl
Fellows

THERESA DIXON &
RACHEL LANZ

Teachers, St. Catherine's - Racine

Growing Leaders of Literacy

Having an effective plan based on school data, high impact strategies, and an understanding of what literacy looks like school-wide is vital.

This hands-on session will investigate a five-step process for growing literacy leaders including (1) Setting a school-wide literacy goal; (2) Defining what it means to be literate in every curricular area; (3) Adopting strategies that work; (4) Building literacy capacity; and (5) Setting goals with the students.

TUNDRA EF

MARY COOPER, SHIRLEY
STOLTZ & ANNELEISA GRUBER

Teachers, St. Mary of the Assumption - Richland Center & Assumption Catholic - Durand

Notre Dame Senior Trustey STEM Fellows

Full S.T.R.E.A.M Ahead

STREAM up your classroom and school! Dig deep into the Engineering Design Process with our All-School Monarch Research Project, Sustainable Biodegradable Cars, and Pea Shoot Research Project. Come and get ideas, resources, and supplies to empower every student, teacher, and administrator to dig deeper with S.T.R.E.A.M!

GLACIER AB

SCOTT BORIS

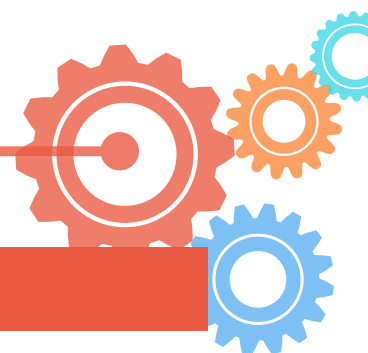
Teacher & Administrator, Christ the Life Lutheran - Waukesha

Nurturing with Nature

This presentation will show you how to use the land and resources around your school to allow Nature Education to be part of your curriculum. This is something very unique and attractive to parents that many other schools can't offer. If you have a wild space on your property, it might work as a nature education area. Topics covered will be play based learning, discovery learning and ways to make it connect with parents. If possible, bring a Google Earth picture of your school's property.

Session #3

1:30 - 2:35 pm



SANDSTONE 8g

Lunch
Intensive
Speaker

MIKE MCGOWAN

President, McGowan & Associates

All That Matters

In a culture that seems increasingly less personal, more sarcastic and more detached, human engagement is still one of the keys to happiness and success. In order to realize our full potential personally and professionally we need healthy boundaries, tactful communication skills, conflict resolution skills and problem solving abilities. Working collaboratively and respectfully with students, parents and other professionals with differing personalities is paramount. In fact, it's all that matters.

TUNDRA AB

Kohl
Fellow

LINDA TEED

Teacher, St. Joseph - Fort Atkinson

What's in the Box? Where Literacy and S.T.E.A.M Collide

Literacy S.T.E.A.M. Boxes bring the love of a great book together with extension activities that can be used to evaluate student understanding through formative assessment. These unique boxes can be built around any book and subject matter, from Language Arts to Science, Math, Social Studies, and Religion. These Project Based Learning Boxes can be created by teachers to best fit their classroom needs.

TUNDRA EF

TAMMY MYERS

President, Xaris Speech & Language Pathology

Johnny Still Can't Pronounce His "R's"

Do you have students who are not receiving adequate speech/language therapy? Do you have students who: (1) Make articulation errors; (2) Don't understand instructions; (3) Cannot express thoughts or ideas even though he/she understands the topic; and (4) Have a hard time making friends?

Come learn four or more best practices for classroom teachers to use to support speech/language development in all of their students.

GLACIER AB

SHERI HOLCOMB

Teacher, Rock County Christian School - Janesville

It's Not One-Size-Fits-All: Techniques for a Differentiated Classroom

Wouldn't it be nice if you could tweak your teaching just a bit and reach many more students at their learning level? Come learn and practice classroom and lesson plan ideas that promote differentiation and personalized learning. Included topics are: (1) How to have students working on different skills in the same lesson; (2) How to have students self-evaluate and demonstrate their learning; and (3) how to introduce and teach different learning techniques your students can use to maximize their own learning.



Session #3 continued

1:30 - 2:35 pm

TUNDRA CD

JIM KROLL

Teacher, St. Paul's Lutheran - Janesville

Use Pickers! Making Assessments a lot Quicker!

Pickers is a powerfully simple tool that lets teachers collect real-time formative assessment data without the need for student devices. In this section you will learn how to use this technology in your classroom and perhaps have some fun.

We will learn how to create Picker questions and use the Pickers technology in the classroom to gather real-time assessment data. Pickers will be demonstrated with a hands-on round of questions/answers.

Post-Conference Resources such as the PowerPoints and handouts included in the workshop sessions and morning/lunch intensives will be available on the WCRIS website following the conference.

Should you need contact information for a specific presenter please do not hesitate to **email WCRIS at wcris.staff@wcris.org**.



Thank You to Our Generous Sponsors

Please stop by the WCRIS Marketplace in Sandstone 1456 to see all that they have to offer and to say hello!

Church Mutual
Alverno College
Instructional Communications Systems (ICS)/UW-Extension
Zaner-Bloser/SuperKids
Children's Hospital of Wisconsin
Marian University
Maris Education
Mrs. Myers Education Service
Precision Roofing Services



Zaner-Bloser appreciates the crucial work you do to teach children to read and write. Our PreK-8 literacy resources are designed to empower you to make the best **instructional choices** and to nurture **successful** and **joyful learning** in your classroom.

Visit our exhibit to discover *The Superkids Reading Program*.™

Mary Eret
651.253.5990
mary.eret@zaner-bloser.com

ADCRG22 07.17

ZB Zaner-Bloser
800.421.3018 • zaner-bloser.com

Wisconsin's Expert Communication Technology Partner SINCE 1965

PROUDLY SERVING:



Government



Higher Education



Nonprofits



K-12



INSTRUCTIONAL
COMMUNICATIONS
SYSTEMS

- WisLine Conferencing (Audio/Video/Web)
- Conference Facility (Pyle Center)
- Lecture Capture
- Consulting
- Video & Audio Production
- Learning Design

UW Extension
University of Wisconsin-Extension

ics.uwex.edu | 855.289.9177



Who We Are

WCRIS is a non-profit, nonpartisan, 501(c)(3) membership association representing more than 100,000 K-12 students and 6,000 teachers in 600 Catholic, Lutheran, Christian, Seventh Day Adventist, and independent schools across Wisconsin.

Sharon Schmeling, Executive Director

Abbie Pavela, Communications & Outreach Coordinator

Laura Sumner-Coon, School Programs Coordinator

Mary Johnson, Administrative Assistant



Thank you for attending!

**Mark your calendar for the next
WCRIS Professional Learning Conference!**

August 10, 2018 | Glacier Canyon Lodge | WI Dells

WCRIS offers a special thanks to:

*Church Mutual for sponsoring lunch; the **Wisconsin Dells Convention and Visitor's Bureau**; **WCRIS teachers and administrators** who volunteered their time to present workshops; **WCRIS school alumni volunteers**; and **Dr. James Kates**, UW-Whitewater for photography.*

Wisconsin Council
of Religious & Independent Schools
Committed to a Higher Standard

[illegible]

NOTES

[illegible]

[illegible]

[illegible]



Advance your **teaching** career at Alverno College

Whether you are looking to add a license or are preparing for your next role as an educational leader, Alverno College offers a variety of specializations that will take you where you want to go.

As a licensed teacher, you can add a new grade-level license or content-area license. If you are seeking an elevated license, you can choose from:

- + ADMINISTRATIVE LEADERSHIP #51
- + ALTERNATIVE EDUCATION #952
- + INSTRUCTIONAL LEADERSHIP #10
- + READING TEACHER #316
- + READING SPECIALIST #317

Questions? Don't hesitate to contact us!

Katie Kipp
414-382-6045 or katie.kipp@alverno.edu

Apply today at
alverno.edu/apply.

We have spots available for this fall! Tuition discounts are available for licensed Wisconsin teachers.





Protect your property and, most importantly, your people.

Church Mutual offers specialized programs and coverages designed especially for your school.

In addition to our customized insurance programs for your schools, we also offer a wide variety of added services, such as expert training and support in handling active shooter situations thanks to our partnerships with the ALICE training institute and Firestorm crisis management firm.

To get a free, no-obligation quote from a local, licensed insurance professional, visit **churchmutual.com/people**.

Follow us   

© 2017 Church Mutual Insurance Company

PROTECTING
THE GREATER
GOOD.

**Church
Mutual**
INSURANCE COMPANY